

- Program established in 2009 (66 of 72)
- 1,755.56 square miles of service area
- Population for the area in 2015: 114,574
- Number of employees: 6 (as of 5/24/16)



2 counties served:

- Chambers
- Liberty

### VOLUNTEER TO CASE RATIO VS. PERCENTAGE OF CHILDREN SERVED TREND

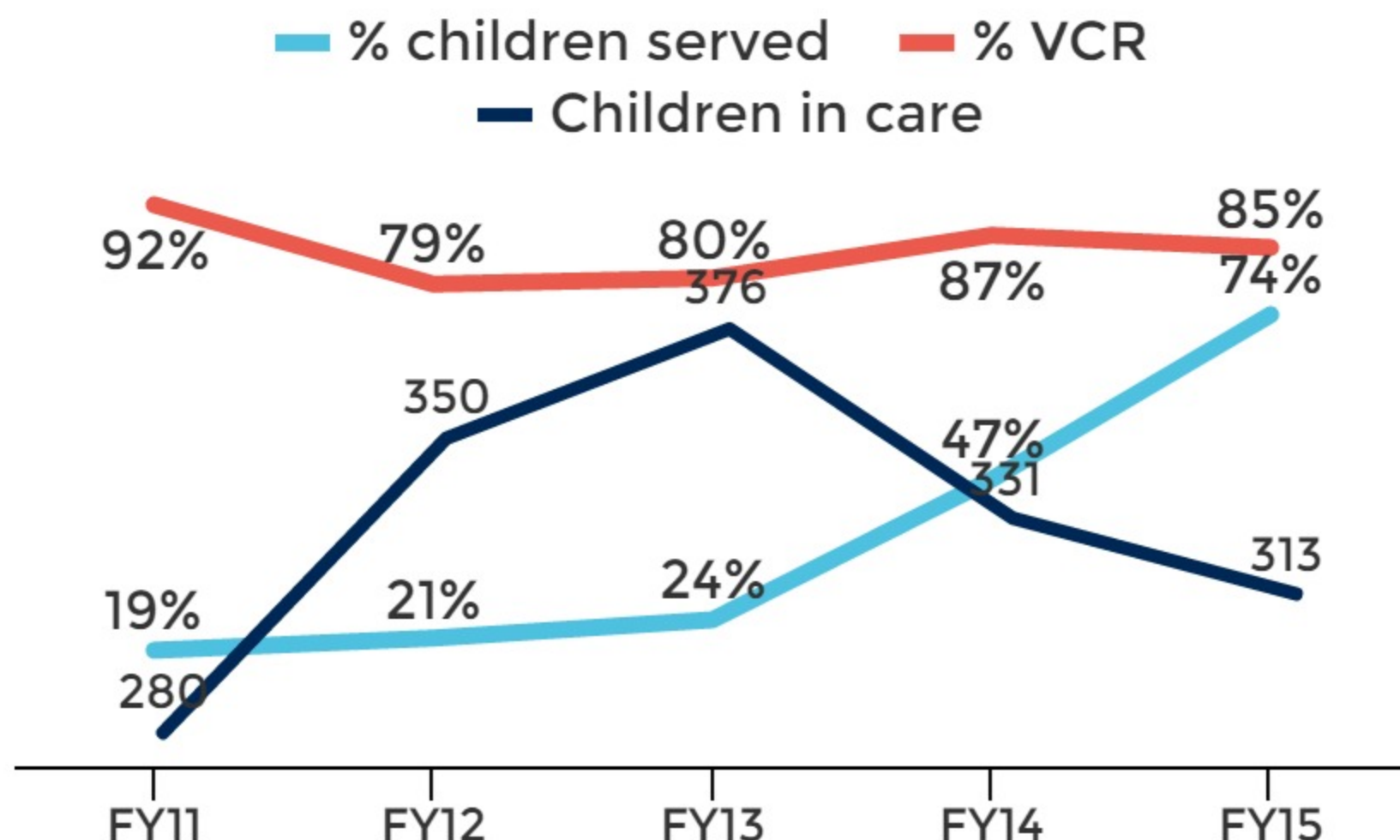
Best quality advocacy is provided when a volunteer speaks for a child in court. Volunteer-to-Case-Ratio (VCR) is the percentage of cases a CASA program serves with volunteers. CASA programs in Texas strive to serve 100% children with volunteers. The current standard requirement is at 80%.

AVERAGE VCR FOR THE STATE FY15

**84%**

AVERAGE GROWTH RATE (NUMBER OF CHILDREN SERVED) FOR THE STATE FY14 TO FY15

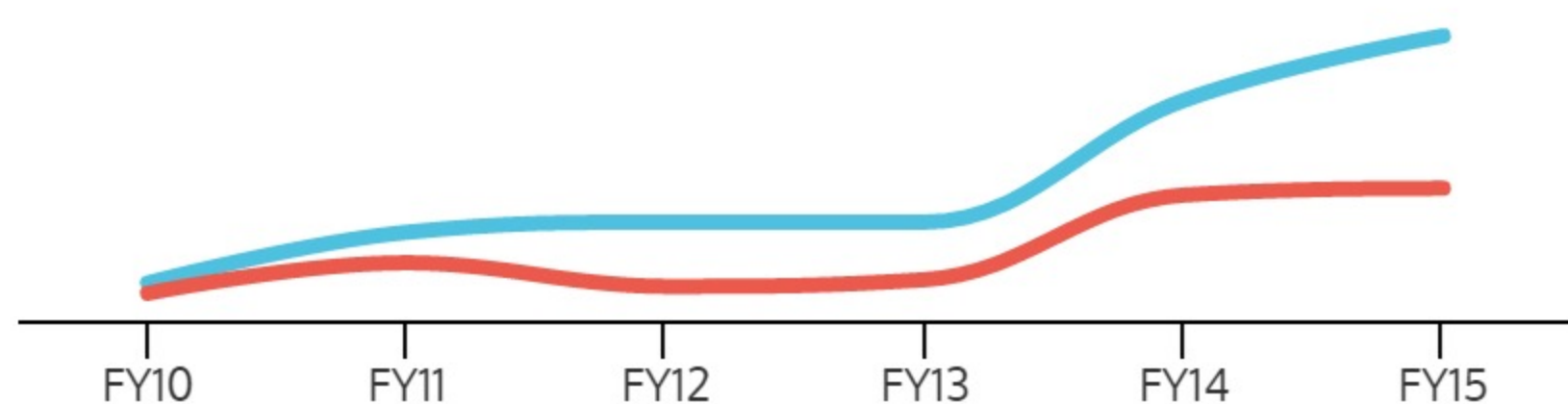
**5%**



Data retrieved from CPS Databook and numbers reported by program to Texas CASA.

### VOLUNTEERS ACTIVE PER YEAR VS. NEW VOLUNTEERS

Active Volunteers (blue line), New Volunteers (red line)



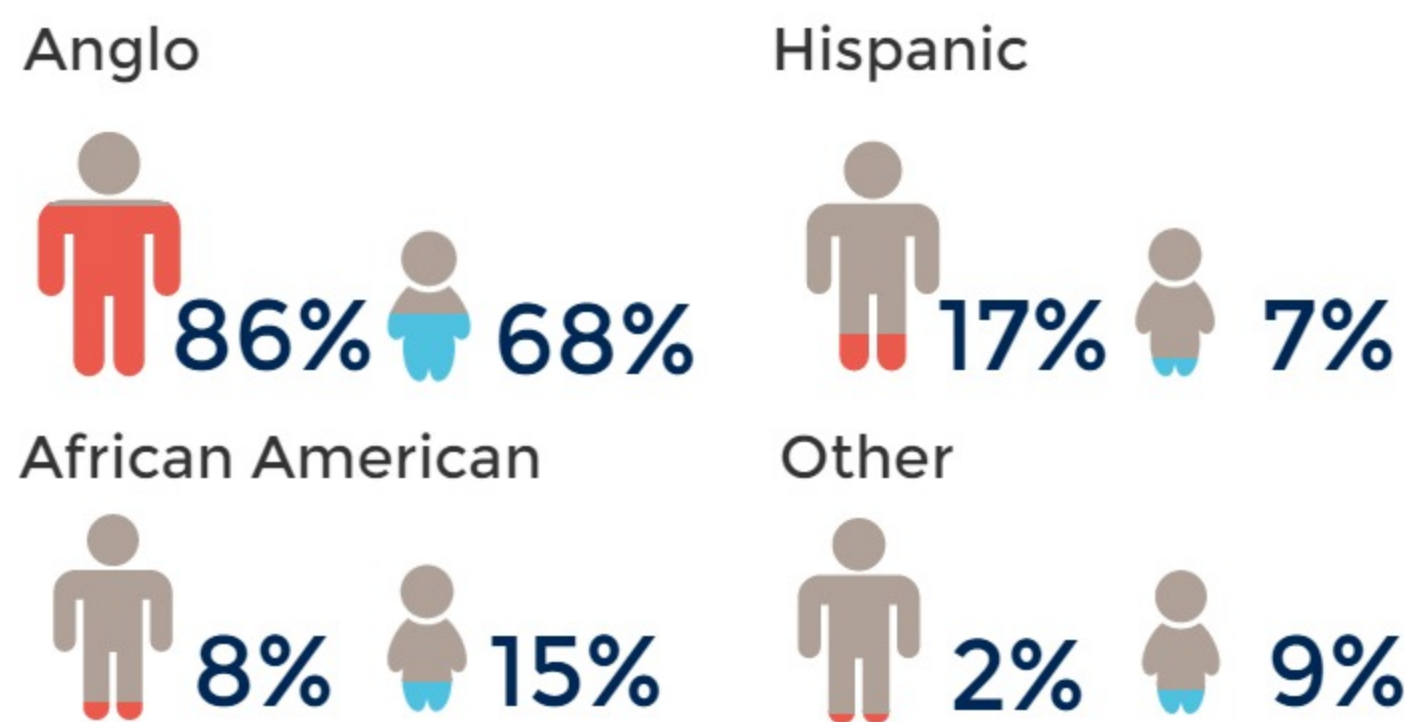
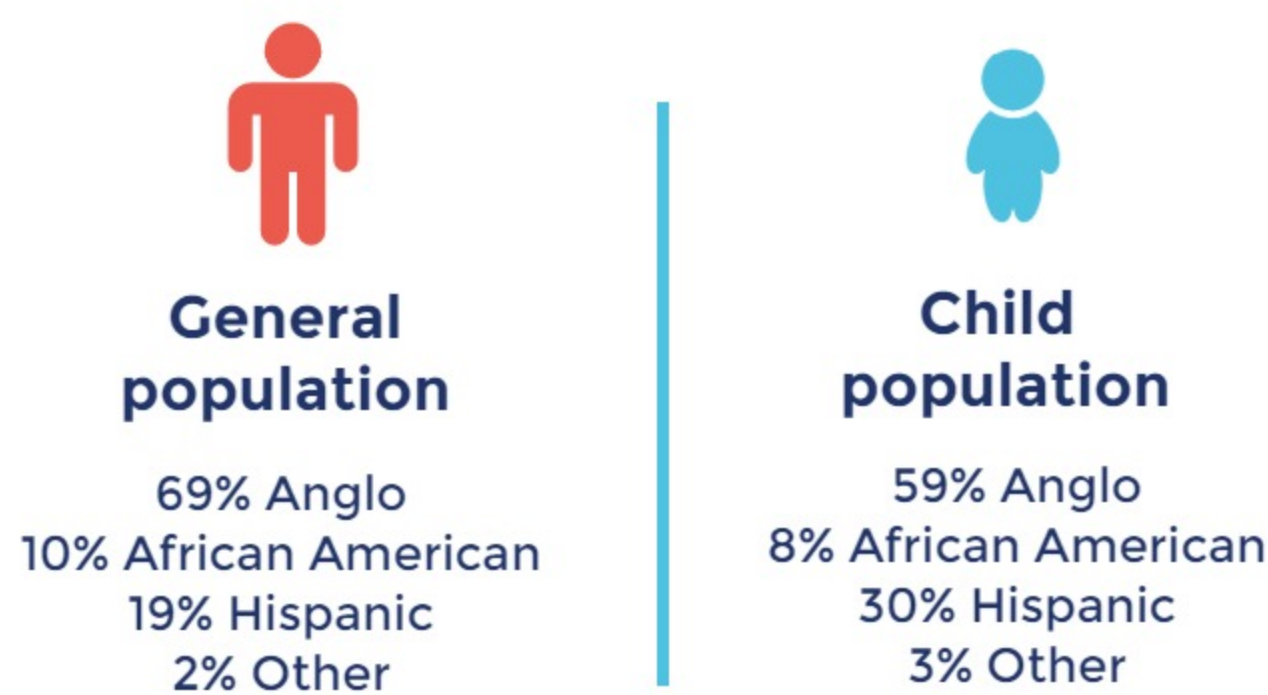
An increase in number of active volunteers per year indicates strong recruitment AND retention practices.

An increase in the number of new volunteers per year indicates strong recruitment practices.

Data retrieved from numbers reported by program to Texas CASA.

### DEMOGRAPHICS FOR COUNTIES SERVED

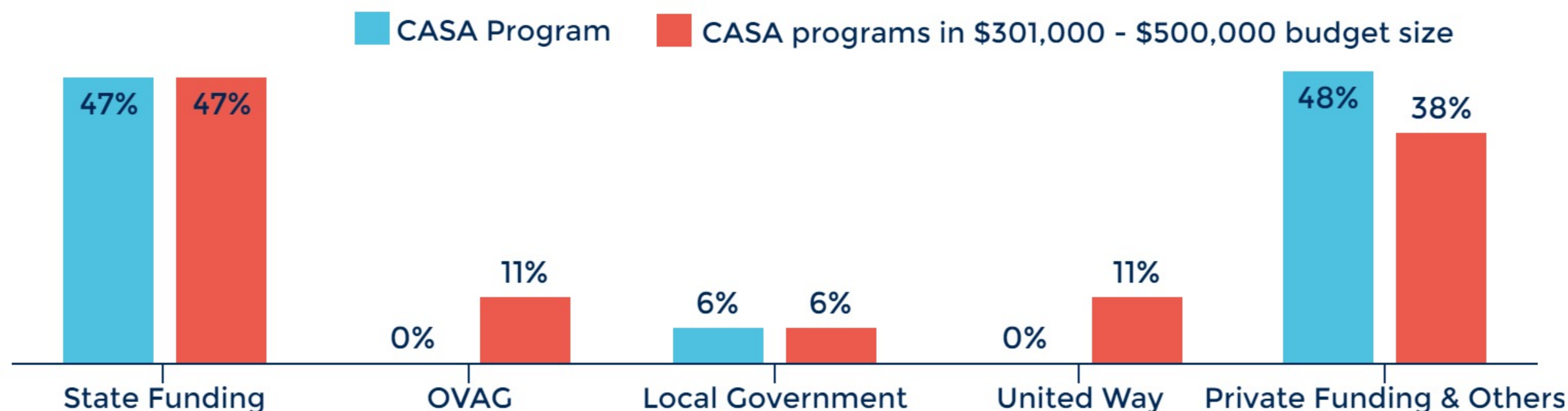
### PROGRAM VOLUNTEERS AND CHILDREN SERVED DEMOGRAPHICS



Data retrieved from state, DFPS information and demographics reported to Texas CASA in FY15.

### FUNDING SOURCES DISTRIBUTION

Funding sources reported by CASA Program to Texas CASA, compared to the average for all programs with the same budget size (\$301,000 - \$500,000).



Data retrieved from numbers reported to Texas CASA in FY15.

\*Fiscal Year (FY) : September 1 - August 31